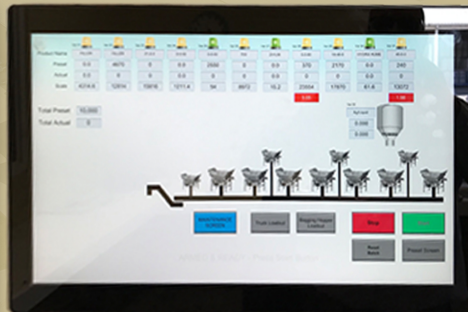


DEPEND ON DOYLE

DECLINING WEIGHT AUTOMATED BLEND SYSTEM



FRIENDLY USER INTERFACE



**CONTINUOUS
FLOW BLENDING**



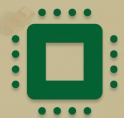
**LOADOUT
UP TO 200-TPH**



**HOPPERS
UP TO 12-TONS**



**MODULAR
DESIGN**



**INTEGRATED
TECHNOLOGY**



"For four generations Doyle Manufacturing has maintained a high standard of excellence, continuously innovative, while producing fertilizer equipment promoting our customer's ability to nourish the world."

QUALITY PRODUCTS. TRUSTED RESULTS.

800-788-8085 | DOYLEMFG.com





DECLINING WEIGHT

Automated Blend System



1. 24" Stainless steel web chain metering unit
2. 8" Stainless steel web chain metering unit for micro hoppers
(Inclined chain meter units for lower service height of hoppers)
3. 16" Incline-auger with external bearing
4. Load-cell cables ran in protective conduit
(Elevated, sealed, and protected scale components for harsh environments)
5. Stainless steel modular hopper - 2, 6, 10, 12 ton capacities with XL hopper extensions available
6. Stainless steel tubing hopper legs
4"x4"x 1/4" wall with heavy gusseting
(Open leg structure for ease of cleaning and maintenance)
7. Stainless steel motor & gear box mounting
8. Copper ground wire for load-cell protection
9. Optional conditioners with 2" bypass screen for high output

-
- Fully automated system for remote control and real-time reporting
 - AC motors with VFD's for improved control and accuracy
 - Multiple metering configurations to meet a variety of blends